




Umang
EK NAYA ESHAAS KHUSHIYO SE BHARA...

3/4 BHK
LUXURIOUS
BUNGALOWS

KEDIA
BUILDERS &
COLONIZERS

RERA NO.: RAJ/P/2023/2571
www.rera.rajasthan.gov.in



EK NAYA EHSAAAS KHUSHIYON SE BHARA

At Umang you live life the elite way. Surround yourself with spiritual energy and dense shadows of an immortal tree. These 3/4 BHK villas are meticulously designed and are a reflection of splendor and peerless beauty. Umang will be the place of happiness, hope, and dreams. Find yourself in a state of Umang with the long tree lined sweeping avenues and landscaped vistas. Come uncover a new beginning in the lap of luxury.



ABOUT US

Kedia Builders and Colonizers has been a pioneering name in the real estate market of Jaipur. Turning vision into reality, the Founder and Chairman Mr Rajendra Kedia laid the keystone of Kedia Builders and colonizers in 1980. He has created prodigious and notable footprints in the sphere of construction for over 4 decades. And now the succeeding generation the Director Mr Saurabh Kedia and the CEO Mr Gaurav Kedia aspire to spread their wings wider and help you in accomplishing your idea of a dream house.

With its headquarters based in Jaipur, Kedia Builders and Colonizers promises excellent returns. We boast of a diverse portfolio that covers Property development and Property Management Services. Over the last 41 years, the company has successfully completed 200+ land development projects.

Our projects are designed to cater to all segments. Kedia Builders and colonizers believe in keeping pace with the fast-changing world and uses modern present-day equipments in construction.







EK NAYA EHSAAAS KHUSHIYON SE BHARA

These bungalows are sculpted to pamper achievers the way they deserve to be pampered. Umang promises you a life of grandeur and a lifestyle ripped out of a king's diary. The designer bungalows are the epitome of contemporary architecture and are crafted with structural contemplations that defy conventional living spaces.

The exclusively designed entrance of the bungalows represents an interplay of natural ventilation with trees dotting the pathway. The interiors of the villas are crafted to provide benefits of optimum space utilization. Top notch quality material is used in constructing these villas which speak for itself. Umang is a house you don't merely own, but flaunt.

GROUND FLOOR



FIRST FLOOR

TOTAL BUILT-UP AREA: 1224.00 sq.ft.

PLAN A



GROUND FLOOR PLAN



FIRST PLAN

GROUND FLOOR

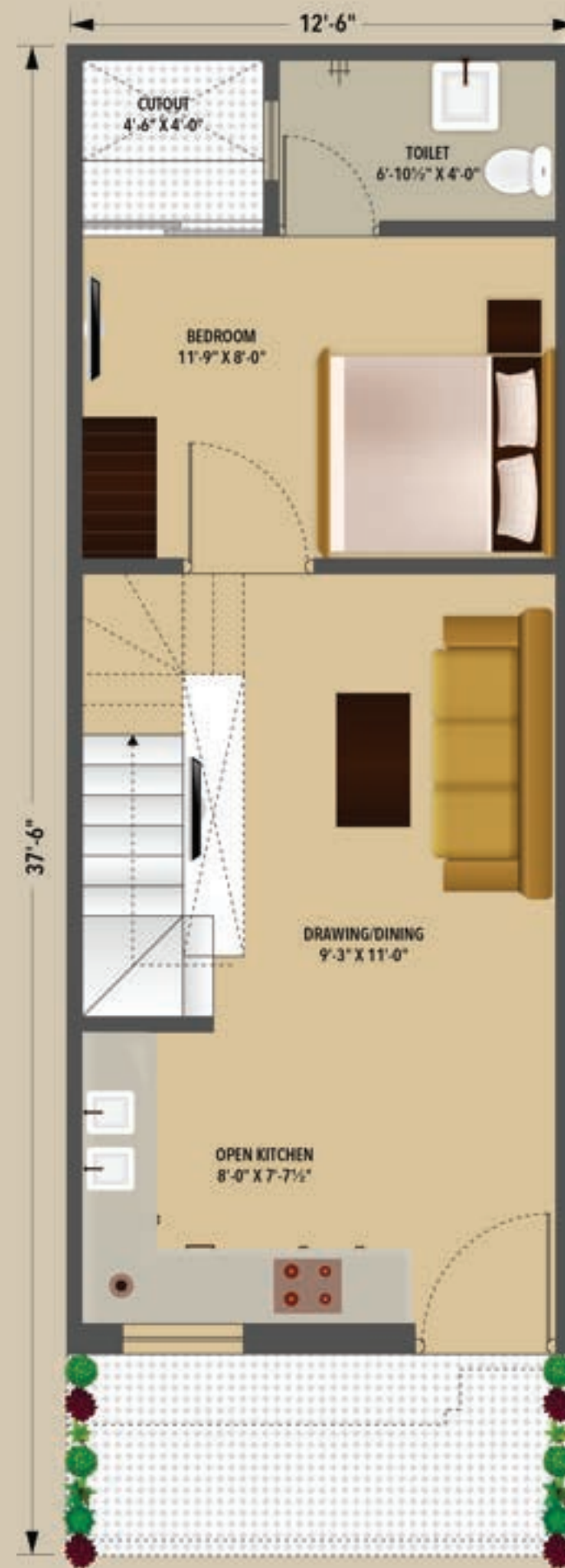


FIRST FLOOR

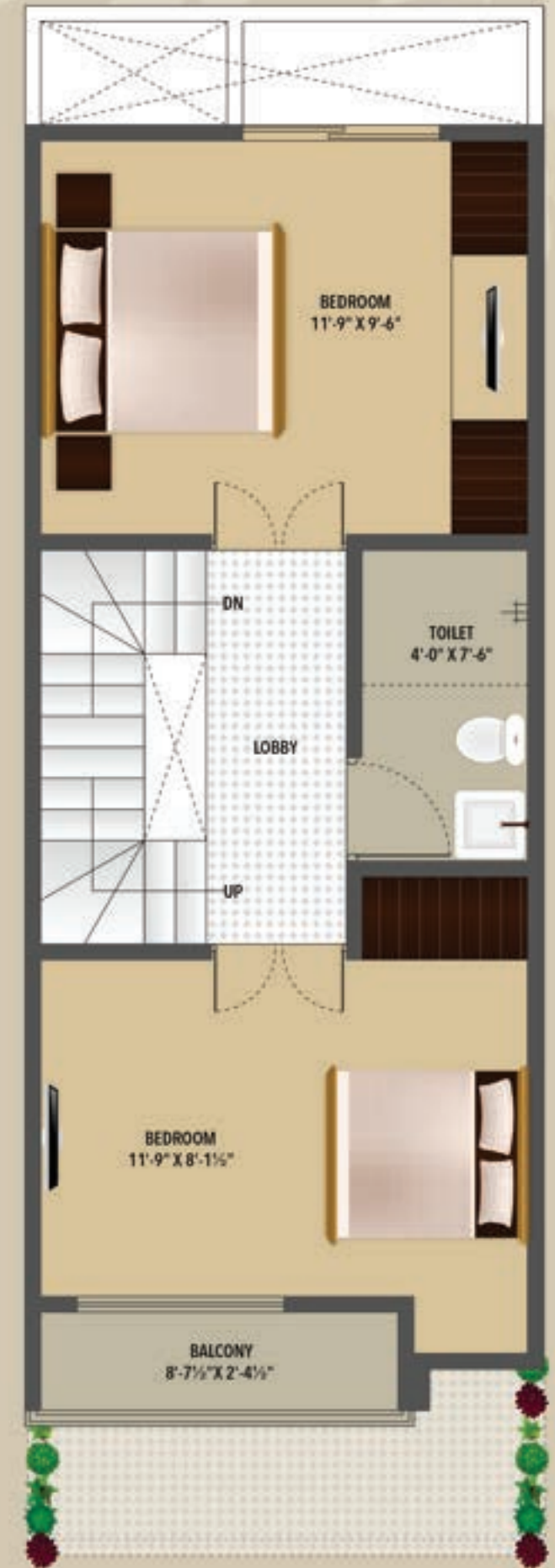


TOTAL BUILT-UP AREA: 890.00 sq.ft.

PLAN B



GROUND PLAN



FIRST PLAN

GROUND FLOOR



FIRST FLOOR



TOTAL BUILT-UP AREA: 1152.00 sq.ft.

PLAN C





EXTENDS A RELAXED RHYTHM OF LIFE

These aesthetically pleasing villas make you feel at home in every sense of the phrase. Each Bungalows is designed with impeccable taste to suit those whose lifestyle is several cuts above the rest. The entire property is lavishly laid out with sprawling open areas to facilitate both undisturbed private moments and exuberant camaraderie.

These units are well ventilated and lit, spacious and cradled by nature. Bask in the positive vibes and energy to lift your spirits after a long strenuous day. Move in, for words alone cannot describe the experience that awaits you at Umang.

INFRA



3 TIER
SECURITY SYSTEM



ADEQUATE
WATER SUPPLY



DESIGNER
ROAD LIGHTS



MAINTENANCE
SOCIETY OFFICE



UNDERGROUND
ELECTRICITY



RETAIL
SHOPS



MODERN DESIGN &
ARCHITECTURE



VILLA COMMUNITY
LIVING EXPERIENCE



STP



GARDEN & KIDS
PLAYAREA



EARTHQUAKE RESISTANT
STRUCTURE



EAST & WEST
FACING VILLAS



INTERLOCK/
CEMENTED ROADS



RAIN WATER
HARVESTING SYSTEM



CLUB HOUSE

LOCATION ADVANTAGES



WELL
CONNECTED



EASY
APPROACH



BASIC AMENITIES
NEARBY



HIGHWAY CONNECTIVITY
(2 MINUTES)



BANK & ATM
AVAILABILITY



SCHOOLS
(3 Minutes)



HOSPITAL
(2 Minutes)



Departmental Store
(8 MINUTES)



MALL
(4 Minutes)



RAILWAY STATION /BUS STAND
(2 Minutes)



SPECIFICATIONS

STRUCTURE

Earthquake Resistant
Structure Designed As Per
Seismic Zone II Adequate
Natural Light And
Ventilation Overhead &
Underground Water Tanks
Pest control

FLOORING

Vitrified Tile Flooring In
Living, Dining, Kitchen &
Bedroom
Vermora or Equivalent
Brand
Anti skit tiles in Bathroom
GRANITE in Staircase

WALL & CEILING FINISHES

Fall Ceiling In Drawing &
Dining Area & Master
Bedroom Premium
Quality,astic Paint On
Interior Walls & Ceilings

DOOR & WINDOW FINISHES

Laminated Flush Door In
All Bedrooms &
Washrooms
Aluminum/UPVC Slider
Doors And Windows With
Glass Panels

WASHROOMS

Designer Ceramic Wall
Tiles Up To 7/8'
Height Premium Quality
CP Fittings Wash Basin
Provision for gyser and
exhaust fan
Plumbing Fitting

ELECTRICAL


Premium Quality Wires &
Cables AC Copper Piping
In Drawing, Dining And All
Bedrooms

KITCHENS

Under Counter Semi
Modular Cabinets Stainless
Steel Sink Provision for Lines
Gas bank

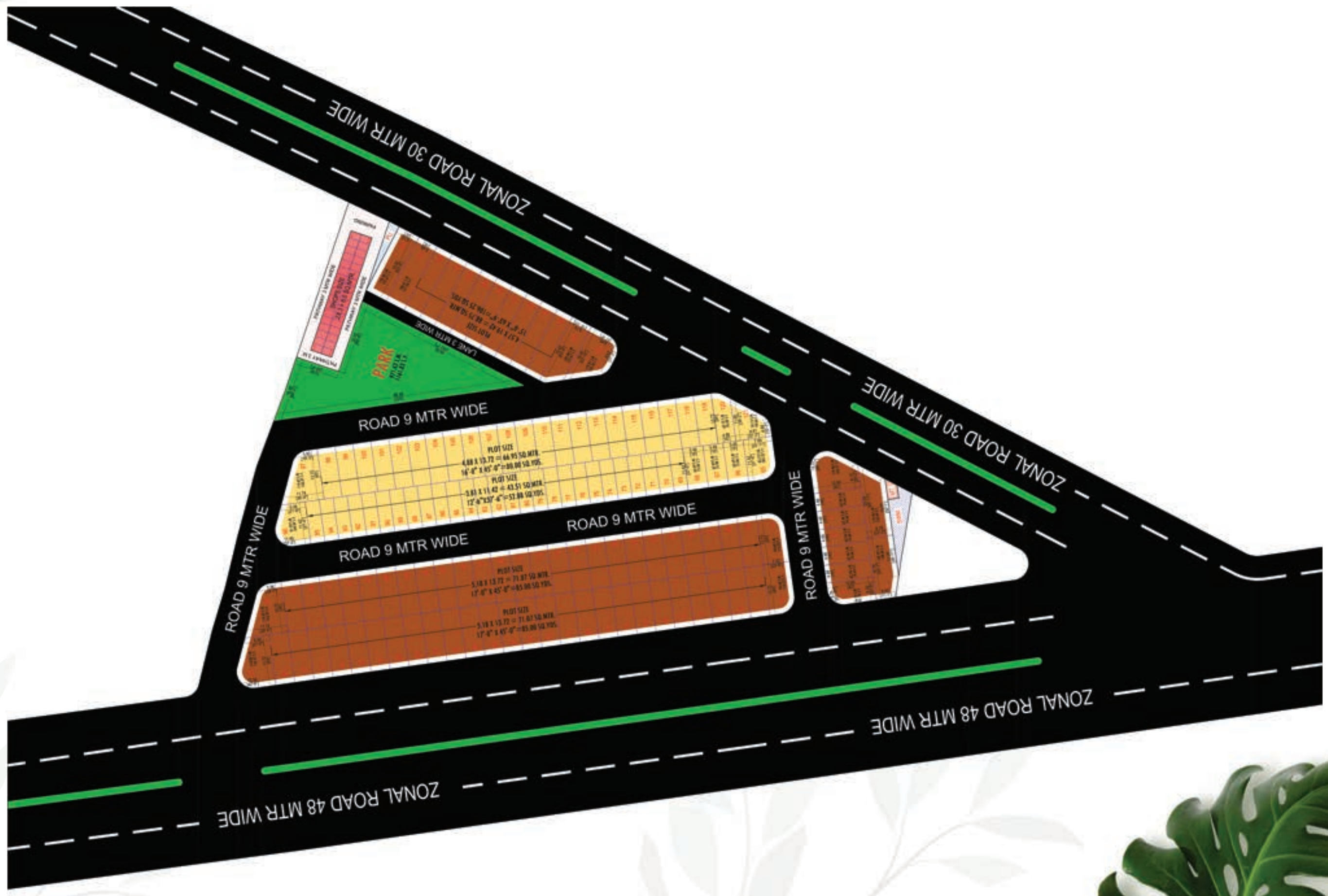
SECURITY SYSTEM

CCTV surveillance at
Entrance & Exit
Township



BUILT WITH THE BEST





WHY KEDIA'S UMANG IS THE PERFECT DREAM HOME FOR YOU

 **EXCELLENT LOCATION**
Well connected & away from pollution

 **QUALITY AT VERY STEP**
Be it construction, maintenance or customer care

 **TIMELY POSSESSION**
POSSESSION ON TIME AS PROMISED

 **EXCLUSIVE CLUBHOUSE**
The best clubhouse in a villa township

 **BEST PRICING**
Luxury comes affordable at ideal price

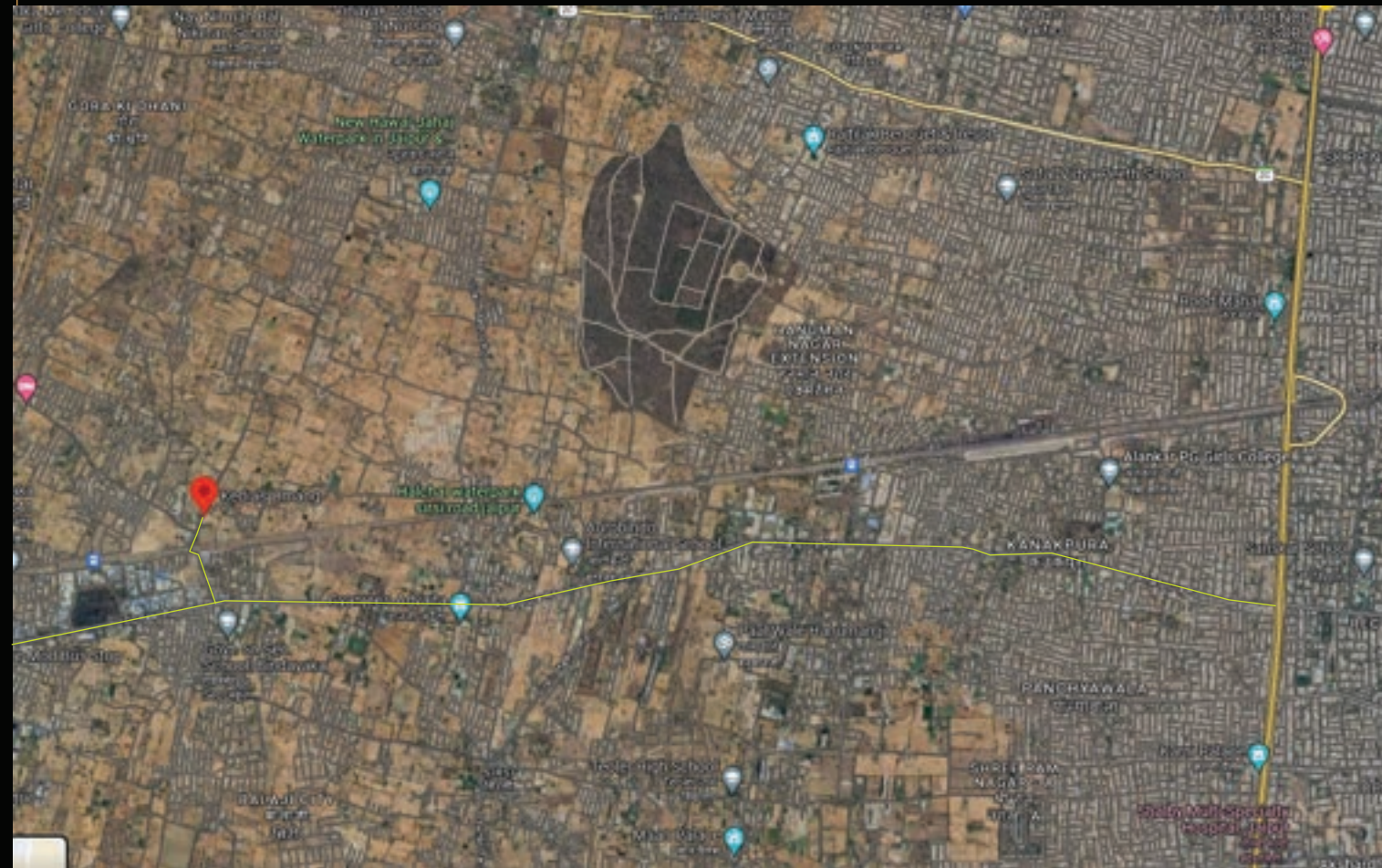
 **TRANSPARENCY IN WORK**
NO EXTRA COST





+91-8302-500-500

SIRSI ROAD, VAISHALI EXTENTION, JAIPUR



KEDIA
BUILDERS &
COLONIZERS



www.kediabuilders.com
A 13,, 14, Shyam nagar Benad Road, Jhotwara,
Jaipur, Rajasthan 302012

RERA NO.: RAJ/P/2023/2571
www.rera.rajasthan.gov.in